



Please note that Cypress is an Infineon Technologies Company.

The document following this cover page is marked as “Cypress” document as this is the company that originally developed the product. Please note that Infineon will continue to offer the product to new and existing customers as part of the Infineon product portfolio.

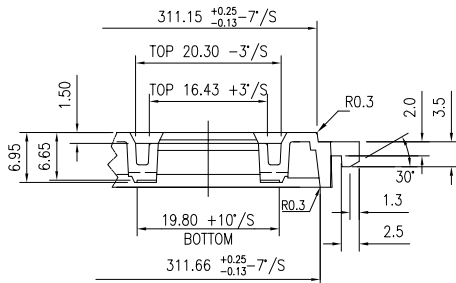
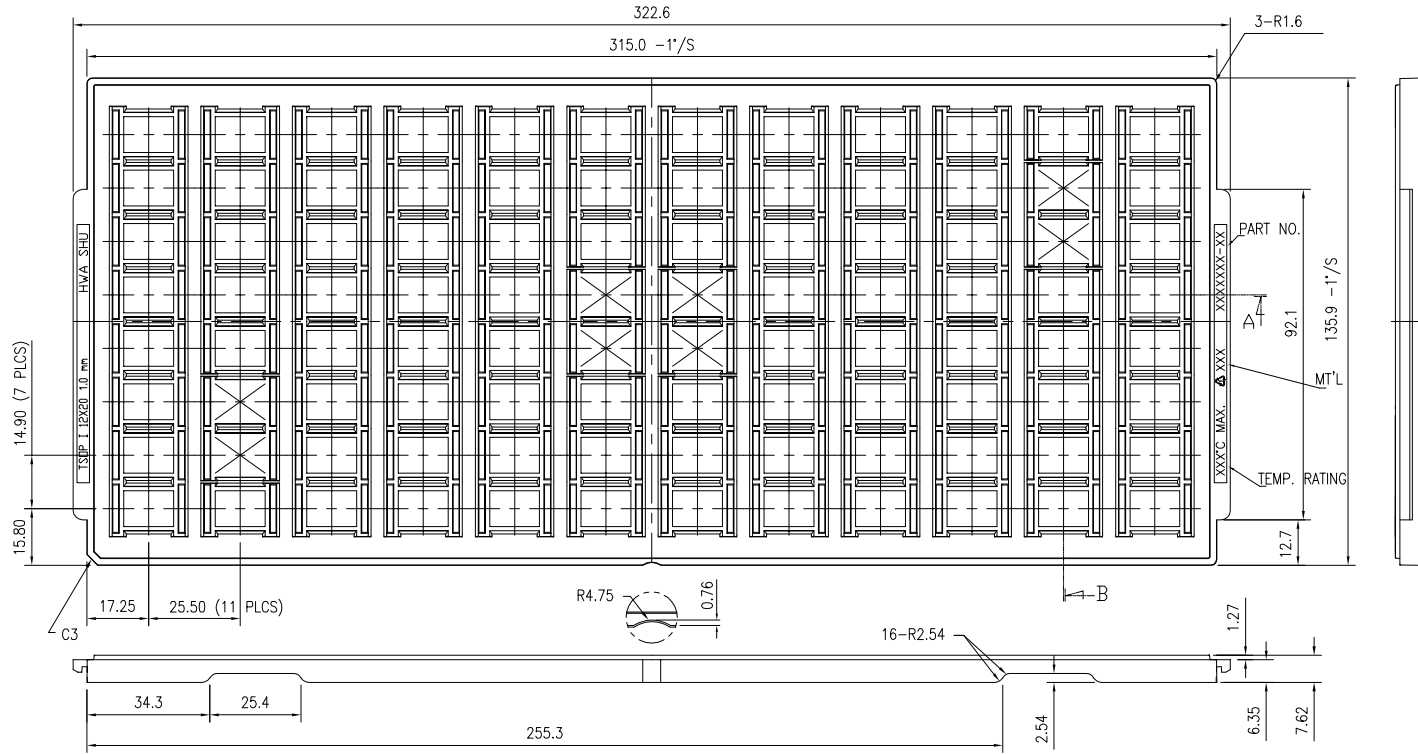
Continuity of document content

The fact that Infineon offers the following product as part of the Infineon product portfolio does not lead to any changes to this document. Future revisions will occur when appropriate, and any changes will be set out on the document history page.

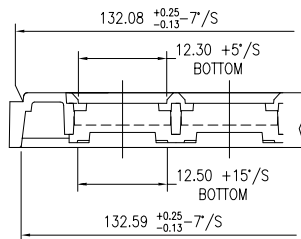
Continuity of ordering part numbers

Infineon continues to support existing part numbers. Please continue to use the ordering part numbers listed in the datasheet for ordering.

REVISIONS						
PAGE	ZONE	REV	ECN	DESCRIPTION	DATE	APPROVER
1	-	**	410781	NEW RELEASE (ECN MEMO#84)	11/30/05	
ALL	-	*A	3097564	UPDATE DRAWING BASED ON THE SUPPLIER'S LATEST DRAWING INCLUDE BOTTOM, ONE-CELL, TWO-CELL VIEWS ADDED TABLE FOR MATERIAL PROPERTIES CHANGE DRAWING TEMPLATE	12/15/10	
ALL	-	*B	3475716	ADDED DIMENSION FOR SECOND STRAP GUIDE SLOT REMOVE LAYER COLORS ON PDF FILE.	12/27/11	
ALL	-	*C	4621691	UPDATE DRAWING TEMPLATE	01/13/15	
ALL	-	*D	5801276	UPDATE STANDARD TOLERANCE IN DRAWING TEMPLATE	07/06/17	



SECTION A (2/1)



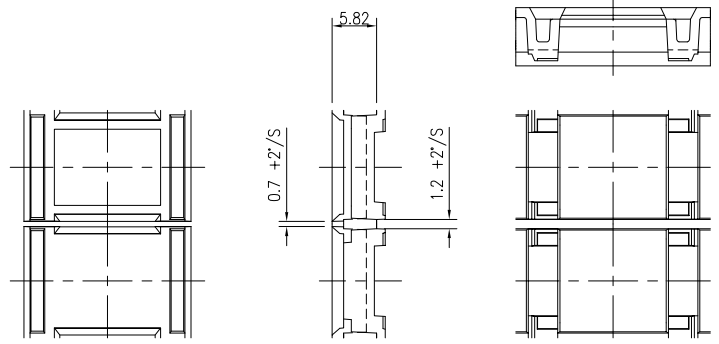
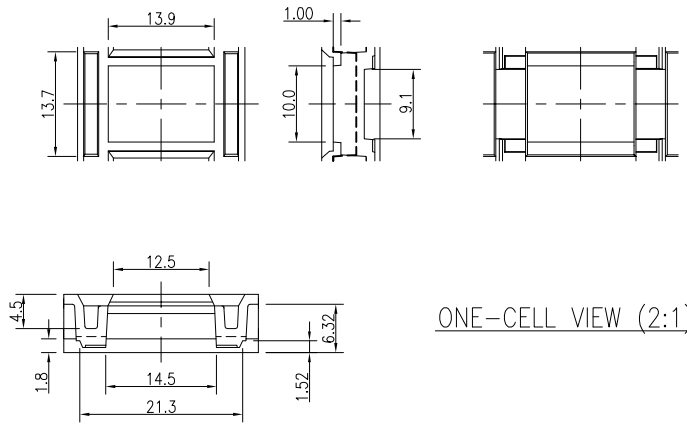
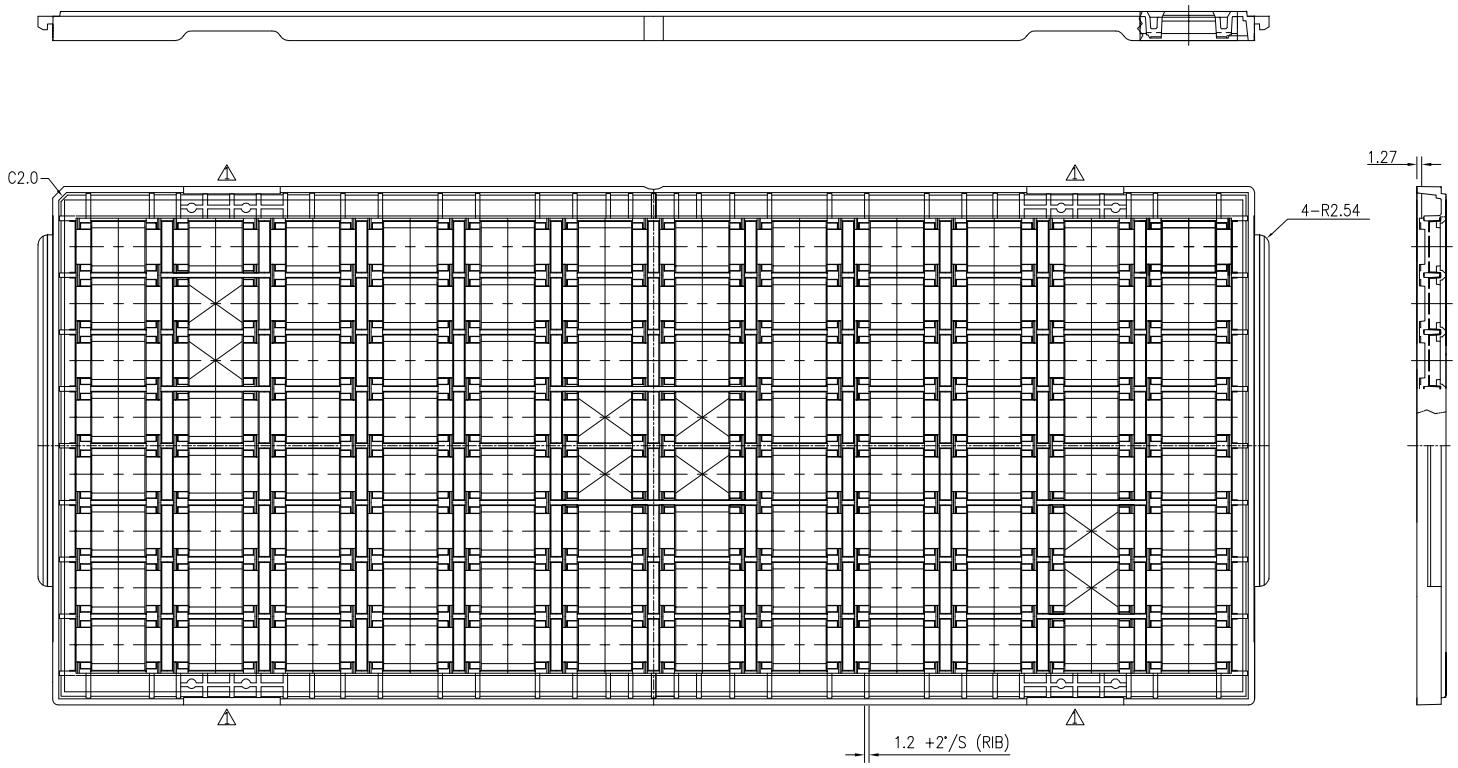
SECTION B (2/1)

NOTES:

- (S.R. OHM/SQ.) MEANS SURFACE ELECTRIC RESISTIVITY OF THE TRAY. (ASTM D257)
- THE MOLDED TRAY'S MATERIAL SHALL BE RIGID ENOUGH TO AVOID DAMAGE TO THE COMPONENTS DURING HANDLING, LOADING, BACKING, TESTING, SHIPPING AND PLACING.
- TEMP. °C IS THE MAXIMUM OPERATING TEMPERATURE. THE EMPTY TRAY CAN BE SUBJECTED TO FOR 48 CONTINUOUS HOURS BAKING WITHOUT VIOLATING THE DIMENSIONAL TOLERANCE OF THE TRAY.
- TRAYS ARE STACKABLE WITHOUT INTERFERENCE AND WILL NOT STICK TOGETHER DURING UNSTACKING OPERATION.
- WARPAGE IS WITHIN 0.76 mm.
- THE CELLS MARKED WITH CROSS SYMBOL ARE FOR VACUUM PICKUP AREA.
- TOTAL USABLE CELLS 8X12=96.
- THE TRAY MEETS JEDEC STANDARD.

S.R. (OHM/SQ.)	MATERIAL	COLOR	TEMP. (°C)	SUPPLIER P/N
1X10 ⁵ ~9X10 ⁹	PPE	BLACK	150°C MAX.	EA51220-10

UNLESS OTHERWISE SPECIFIED		DESIGNED BY	DATE		
ALL DIMENSIONS ARE IN MILLIMETERS STANDARD TOLERANCES ON:		DRAWN	DATE		
DECIMALS	ANGLES	XVC	01/13/15		
.X ± 0.25	± 1.0	CHK BY	DATE		
.XX ± 0.13		ECVI	01/13/15		
.XXX		APPROVED BY	DATE		
		QAD	01/13/15		
MATERIAL		APPROVED BY	DATE		
SEE NOTE		UYO	01/13/15		
FINISH					
SEE NOTE					
TITLE		SIZE	PART NO.	DWG NO.	REV
TRAY, TSOP 48 I 12X20 1.00MM (HWA SHU)		A	TZ122010-*	001-05892	*D
DO NOT SCALE		SHEET		1 OF 2	



ONE-CELL VIEW (2:1)

TWO-CELL VIEW (2:1)

UNLESS OTHERWISE SPECIFIED ALL DIMENSIONS ARE IN MILLIMETERS STANDARD TOLERANCES ON: DECIMALS ANGLES .X ± 0.25 ± 1.0 .XX ± 0.13 .XXX	DESIGNED BY	DATE					
	DRAWN	DATE					
	CHK BY	DATE	TITLE	SIZE	PART NO.	DWG NO	REV
	APPROVED BY	DATE	TRAY, TSOP 48 I 12X20 1.00MM (HWA SHU)	A	TZ122010-*	001-05892	*D
MATERIAL	SEE NOTE	APPROVED BY	DATE				
FINISH	SEE NOTE	UYO	01/13/15				
			DO NOT SCALE		SHEET 2 OF 2		

THIS DRAWING CONTAINS INFORMATION WHICH IS THE PROPRIETARY PROPERTY OF CYPRESS SEMICONDUCTOR CORPORATION. THIS DRAWING IS RECEIVED IN CONFIDENCE AND ITS CONTENTS MAY NOT BE DISCLOSED WITHOUT WRITTEN CONSENT OF CYPRESS SEMICONDUCTOR CORPORATION.