

MCMCAN_1

for KIT_AURIX_TC397_TFT

MCMCAN data transmission

AURIX™ TC3xx Microcontroller Training
V1.0.2



[Please read the Important Notice and Warnings at the end of this document](#)

Scope of work

MCMCAN is used to exchange data between two nodes, implemented in the same device using Loop-Back mode.

A CAN message is sent from CAN node 0 to CAN node 1 using Loop-Back mode. After the CAN message transmission, an interrupt is generated and an LED is turned on to confirm successful message transmission. Once the CAN message is successfully received by the CAN node 1, an interrupt is generated. Inside the interrupt service routine the content of the received CAN message is compared to the content of the transmitted CAN message. In case of a success, another LED is turned on to confirm successful message reception.

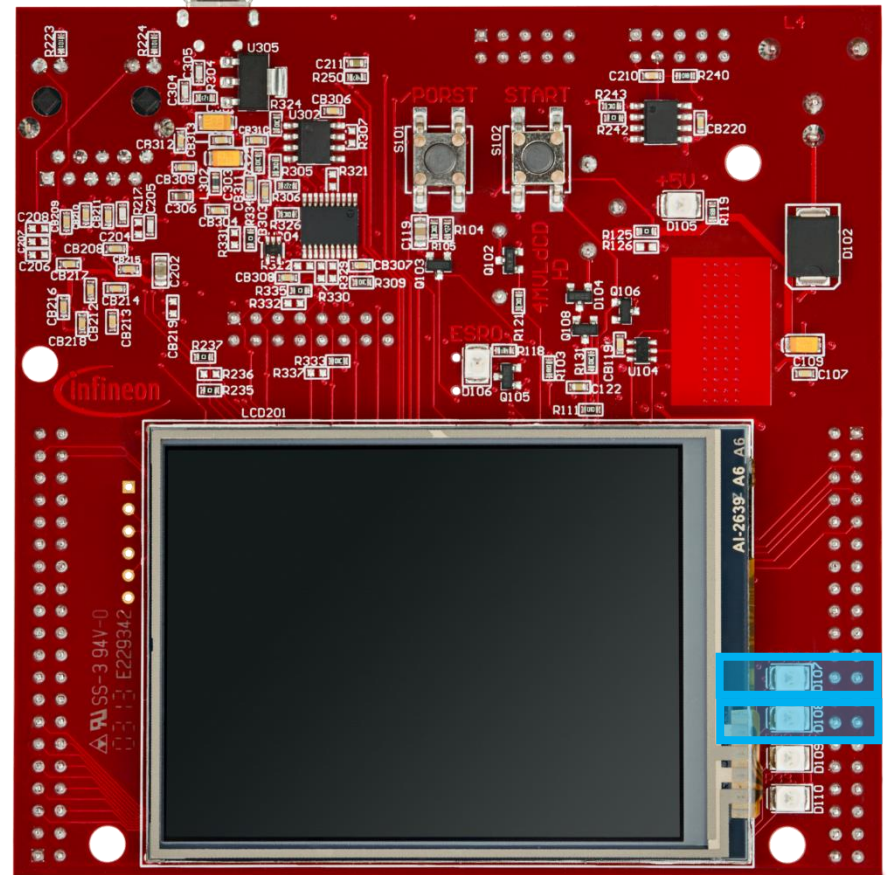
Introduction

- › **MCMCAN** is the new CAN interface replacing MultiCAN+ module from the AURIX™ TC2xx family
- › The MCMCAN module supports **Classical CAN** and **CAN FD** according to the **ISO 11898-1** standard and Time Triggered CAN (**TTCAN**) according to the **ISO 11898-4** standard
- › The MCMCAN module consists of **M_CAN** as CAN nodes (in case of AURIX™ TC39x device, 4 nodes) which are **CAN FD capable**. Each CAN node communicates over two pins (TXD and RXD). Additionally, there is an internal **Loop-Back Mode** functionality available for test purposes
- › A configurable **Message RAM** is used to store the messages to be transmitted or received. The message RAM is shared by all the CAN nodes within a MCMCAN module

Hardware setup

This code example has been developed for the board `KIT_A2G_TC397_5V_TFT`.

In this example, LEDs `D107 (LED1)` and `D108 (LED2)` are used.



Implementation

Application code can be separated into three segments:

- › Initialization of the MCMCAN module with the accompanying node and filter initialization, implemented in the ***initMcmcan()*** function
- › Initialization of the pins that are connected to the LEDs. LEDs are used to verify the success of a CAN message transmission and reception. This is done inside the ***initLeds()*** function
- › Transmission of the configured CAN message, implemented in the ***transmitCanMessage()*** function

Additionally, two interrupt service routines (ISRs) are implemented:

- › On TX interrupt, the LED1 is turned on to indicate successful CAN message transmission (implemented in ***canIsrTxHandler()***)
- › On RX interrupt, the ISR verifies the received CAN message and turns on the LED2 to indicate successful reception (implemented in ***canIsrRxHandler()***)

Implementation

MCMCAN module initialization

Initialization is performed in three phases:

- › A default CAN module configuration is loaded into the configuration structure by using the function ***IfxCan_Can_initModuleConfig()***. Afterwards, the initialization of the CAN module with the user configuration is done with the function ***IfxCan_Can_initModule()***
- › A default CAN node configuration is loaded into the configuration structure by using the function ***IfxCan_Can_initNodeConfig()***. Initialization of the CAN nodes (CAN node 0 and 1) with the different CAN node ID values and definition of Loop-Back Mode usage for both nodes is done with the function ***IfxCan_Can_initNode()***. CAN node 0 is defined as “source node” while CAN node 1 represents a “destination node”. Additionally, an interrupt configuration for both “source node” and “destination node” is done in this phase

Implementation

MCMCAN module initialization

- › The configuration structure of the CAN filter assigns the CAN filter 0 to the receive buffer 0. The acceptance criteria in this case is the matching message ID value. Afterwards, the initialization of the CAN filter with the user configuration is done with the function ***IfxCan_Can_setStandardFilter()***

All functions used for the MCMCAN module, node and filter initialization are declared in the iLLD header ***IfxCan_Can.h***.

Implementation

Initialization of the pins connected to the LEDs

LEDs are used to verify the success of a CAN message transmission and reception. Before using the LEDs, the port pins to which the LEDs are connected must be configured.

- › First step is to set the port pins to level “HIGH”; this keeps the LEDs turned off as a default state (***IfxPort_setPinHigh()*** function)
- › Second step is to set the port pins to push-pull output mode with the ***IfxPort_setPinModeOutput()*** function
- › Finally, the pad driver strength is defined through the function ***IfxPort_setPinPadDriver()***

All functions are declared in the iLLD header ***IfxPort.h***.

Implementation

CAN message transmission

Before a CAN message is transmitted, two messages need to be initialized. TX message (message that will be transmitted) is initialized with the predefined content. RX message (message where the received CAN message will be stored) is initialized with some invalid data (after successful CAN transmission the data will be replaced with the valid data).

- › Initialization of both TX and RX messages is done by using ***IfxCan_Can_initMessage()***
- › A CAN message is transmitted by using the ***IfxCan_Can_sendMessage()*** function. A CAN message will be continuously transmitted as long as the returned status is ***IfxCan_Status_notSentBusy*** (this status occurs if there is a pending transmit request)

All functions are declared in the iLLD header ***IfxCan_Can.h***.

Implementation

Interrupt Service Routines (ISRs)

Two interrupt services routines are implemented: one ISR that is triggered with the successful CAN message transmission and a second one that is triggered with the successful CAN message reception.

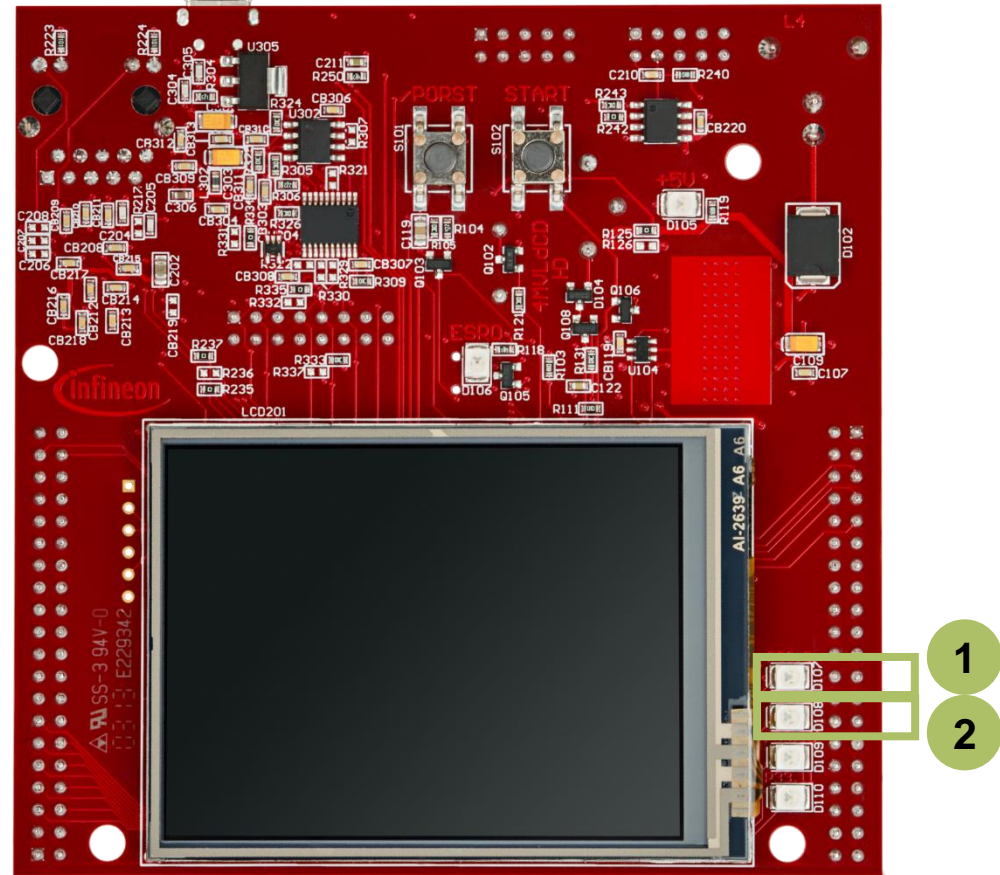
- › TX interrupt service routine clears the pending interrupt flag with the ***IfxCan_Node_clearInterruptFlag()*** function and indicates that the CAN message has been transmitted successfully by turning on LED1
- › RX interrupt service routine clears the pending interrupt flag by using ***IfxCan_Node_clearInterruptFlag()*** function and reads the received CAN message with the ***IfxCan_Can_readMessage()*** function. Afterwards, the received data is compared against the transmitted data. In case of success, the LED2 is turned on to indicate that the received message is correct

The function ***IfxCan_Node_clearInterruptFlag()*** is declared in the iLLD header ***IfxCan.h*** while the function ***IfxCan_Can_readMessage()*** is declared in the iLLD header ***IfxCan_Can.h***.

Run and Test

After code compilation and flashing the device, perform the following steps:

- › Check that LED1 D107 (1) is turned on (successful CAN message transmission by CAN node 0)
- › Check that LED2 D108 (2) is turned on (successful CAN message reception by CAN node 1)



References



- › AURIX™ Development Studio is available online:
- › <https://www.infineon.com/aurixdevelopmentstudio>
- › Use the „*Import...*“ function to get access to more code examples.



- › More code examples can be found on the GIT repository:
- › https://github.com/Infineon/AURIX_code_examples



- › For additional trainings, visit our webpage:
- › <https://www.infineon.com/aurix-expert-training>



- › For questions and support, use the AURIX™ Forum:
- › <https://www.infineonforums.com/forums/13-Aurix-Forum>

Revision history

Revision	Description of change
V1.0.2	Update of version to be in line with the code example's version
V1.0.1	Removed mention of the <code>IfxCan_Node_clearRxBufferNewDataFlag()</code> function
V1.0.0	Initial version

Trademarks

All referenced product or service names and trademarks are the property of their respective owners.

Edition 2021-03

Published by

Infineon Technologies AG

81726 Munich, Germany

© 2021 Infineon Technologies AG.

All Rights Reserved.

Do you have a question about this document?

Email: erratum@infineon.com

Document reference

MCMCAN_1_KIT_TC397_TFT

IMPORTANT NOTICE

The information given in this document shall in no event be regarded as a guarantee of conditions or characteristics (“Beschaffenheitsgarantie”).

With respect to any examples, hints or any typical values stated herein and/or any information regarding the application of the product, Infineon Technologies hereby disclaims any and all warranties and liabilities of any kind, including without limitation warranties of non-infringement of intellectual property rights of any third party.

In addition, any information given in this document is subject to customer’s compliance with its obligations stated in this document and any applicable legal requirements, norms and standards concerning customer’s products and any use of the product of Infineon Technologies in customer’s applications.

The data contained in this document is exclusively intended for technically trained staff. It is the responsibility of customer’s technical departments to evaluate the suitability of the product for the intended application and the completeness of the product information given in this document with respect to such application.

For further information on the product, technology, delivery terms and conditions and prices please contact your nearest Infineon Technologies office (www.infineon.com).

WARNINGS

Due to technical requirements products may contain dangerous substances. For information on the types in question please contact your nearest Infineon Technologies office.

Except as otherwise explicitly approved by Infineon Technologies in a written document signed by authorized representatives of Infineon Technologies, Infineon Technologies’ products may not be used in any applications where a failure of the product or any consequences of the use thereof can reasonably be expected to result in personal injury.