

Quick-start guide for XENSIV™ PAS CO2 Sensor2Go evaluation kit

About this document

This document will help users to work with the XENSIV™ PAS CO2 Sensor2Go evaluation kit. The XENSIV™ PAS CO2 Sensor2Go evaluation kit is developed as a plug-and-play module for the assessment of the XENSIV™ PAS CO2 sensor.

Scope and purpose

This document will define XENSIV™ PAS CO2 Sensor2Go evaluation kit functions, the procedure for integrating with the XENSIV™ PAS CO2 mini-evaluation board, and the necessary steps required to get a readout from the kit.

Intended audience

Application engineers, system engineers, and system architects of an application where the XENSIV™ PAS CO2 mini-evaluation board will be integrated.

Sales part codes

SP005582413 – XENSIV™ PAS CO2 Sensor2Go evaluation kit

SP005577475 – XENSIV™ PAS CO2 mini-evaluation board

Table of contents

About this document	1
Table of contents	1
1 Introduction to XENSIV™ PAS CO2 Sensor2Go evaluation kit	2
2 Hardware details	3
2.1 Connection of the mini-evaluation board with the motherboard	3
2.2 XENSIV™ PAS CO2 mini-evaluation board	4
3 Software	5
3.1 Step 1: Downloading the GUI	5
3.2 Step 2: Installing the GUI.....	5
3.3 Step 3: Connect XENSIV™ PAS CO2 Sensor2Go.....	7
3.4 Main Toolbar.....	8
3.5 Additional features.....	9
4 Appendix	11
4.1 Schematics for evaluation motherboard	11
Revision history	12

1 Introduction to XENSIV™ PAS CO2 Sensor2Go evaluation kit

The XENSIV™ PAS CO2 is a real CO₂ sensor that improves the size and performance of existing CO₂ sensor solutions. This sensor has been designed based on the unique photoacoustic spectroscopy (PAS) principle. To ensure efficient and quick evaluation, the XENSIV™ PAS CO2 Sensor2Go Evaluation kit is offered. An easy-to-use PC GUI is offered along with the package. The contents of the kits are shown in Figure 1.



Figure 1 XENSIV™ PAS CO2 Sensor2Go Evaluation kit

The complete Sensor2Go evaluation kit includes:

- XENSIV™ PAS CO2 evaluation motherboard
- XENSIV™ PAS CO2 mini-evaluation board
- micro-USB cable

Key features:

- Communication to a PC GUI via micro USB
- Power management unit ensuring stable 12V for the light source

2 Hardware details

2.1 Connection of the mini-evaluation board with the motherboard

Connect the mini-evaluation board and motherboard as shown in Figure 2. For proper connection please connect pin 1 of the mini-board as shown in the figure.

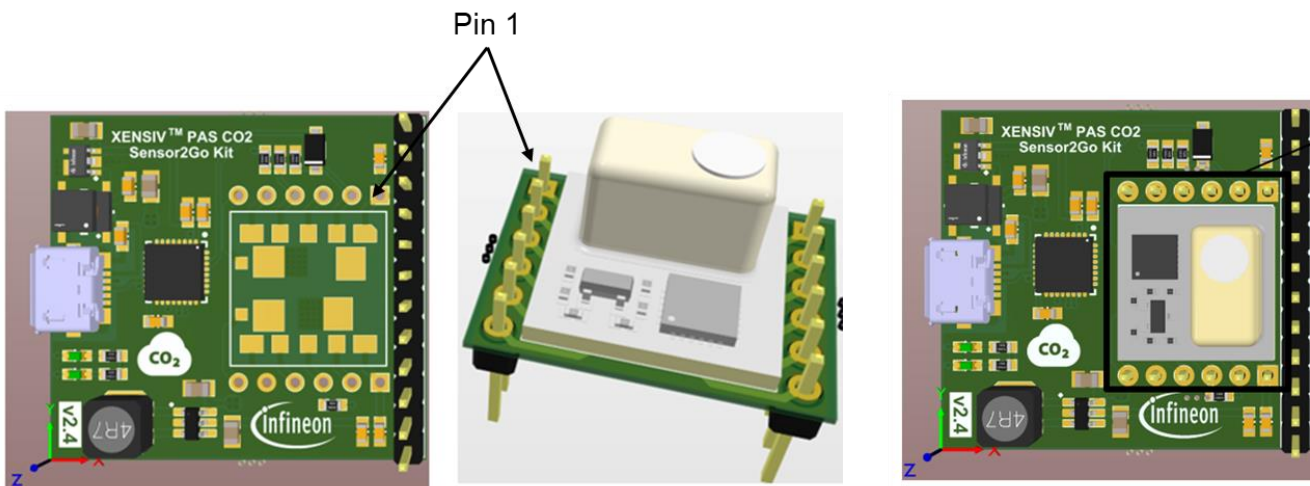


Figure 2 Connection of the mini-evaluation board with the sensor to go evaluation kit motherboard

The relevant pin description of the XENSIV™ PAS CO2 mini evaluation board is presented in the following table.

Pin (mini-board connection)	Pin (external pin header)	Symbol	Type	Description
1	3	VDD3.3	Power supply (3.3 V)	3.3 V digital power supply
2	4	RX	Input	UART receiver pin
3	6	SCL	Input/Output	I ² C clock pin (3.3 V domain)
4	5	TX/SDA	Input/Output	UART transmitter pin (3.3 V domain)/I ² C data pin (3.3 V domain)
5	9	PWM_DIS	Input	PWM disable input pin (3.3 V domain)
5b	11	SWD	N/A	Do not connect
6b	12	SWCLK	N/A	Do not connect
6	1	GND	Ground	Ground
7	8	INT	Output	Interrupt output pin (3.3 V domain)
8	7	PSEL	Input	Communication interface select input pin (3.3 V domain)
9	10	PWM	Output	PWM output pin (3.3 V domain)
10	2	VDD12	Power supply (12 V)	12 V power supply for the IR emitter

2.2 XENSIV™ PAS CO2 mini-evaluation board

The XENSIV™ PAS CO2 sensor is assembled on the mini-evaluation board as shown in Figure 3. The mini-evaluation board has extended male pin headers and can be treated as a standalone sample. Its internal registers can be accessed via external pins using communication protocols such as I²C, UART, or PWM.

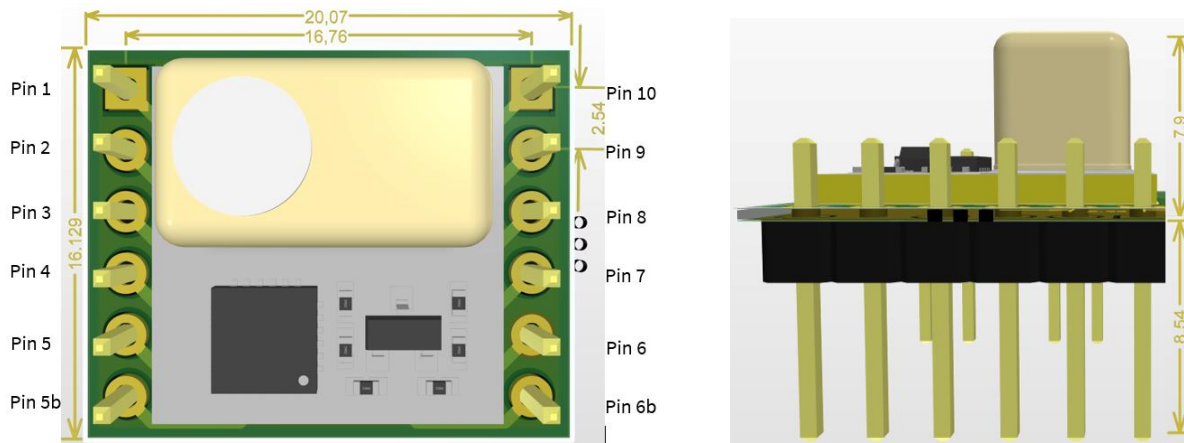


Figure 3 Top and side view of XENSIV™ PAS CO2 mini-evaluation board; all dimensions are in mm

The relevant pin descriptions of the XENSIV™ PAS CO2 mini-evaluation board are presented in the following table.

Pin	Symbol	Type	Description
1	VDD3.3	Power supply (3.3 V)	3.3 V digital power supply
2	RX	Input	UART receiver pin
3	SCL	Input/Output	I ² C clock pin (3.3 V domain)
4	TX/SDA	Input/Output	UART transmitter pin (3.3 V domain)/I ² C data pin (3.3 V domain)
5	PWM_DIS	Input	PWM disable input pin (3.3 V domain)
5b	SWD	N/A	Do not connect
6b	SWCLK	N/A	Do not connect
6	GND	Ground	Ground
7	INT	Output	Interrupt output pin (3.3 V domain)
8	PSEL	Input	Communication interface select input pin (3.3 V domain)
9	PWM	Output	PWM output pin (3.3 V domain)
10	VDD12	Power supply (12 V)	12 V power supply for the IR emitter

Note: Before performing the evaluation, it is recommended to perform Forced Compensation (FC) or enable Automatic Baseline Offset Correction (ABOC).

3 Software

XENSIV™ PAS CO2 Sensor2Go kit can be evaluated on the XENSIV™ PAS CO2 Sensor2Go GUI. It is a plug-and-play solution. Just install the tool in your PC, connect the evaluation kit with your PC and start evaluating the CO₂ sensor.

3.1 Step 1: Downloading the GUI

Before installing the XENSIV™ PAS CO2 Sensor2Go GUI, please uninstall any previous version of the same GUI. The XENSIV™ PAS CO2 Sensor2Go GUI can be downloaded from the Infineon toolbox. Please, download the toolbox from the following link:

Link to Toolbox: <https://www.infineon.com/cms/en/tools/landing/infineontoolbox.html>

Then search for 'XENSIV PAS CO2 Sensor2Go GUI' within the toolbox launcher and install the latest version.

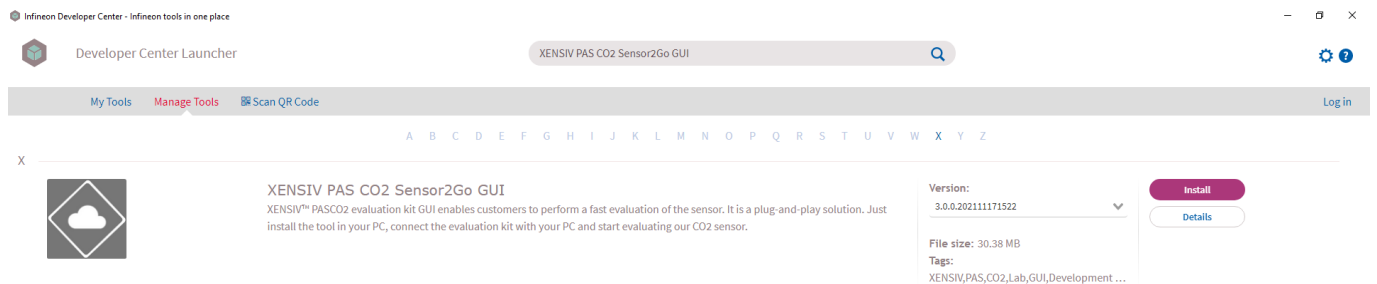
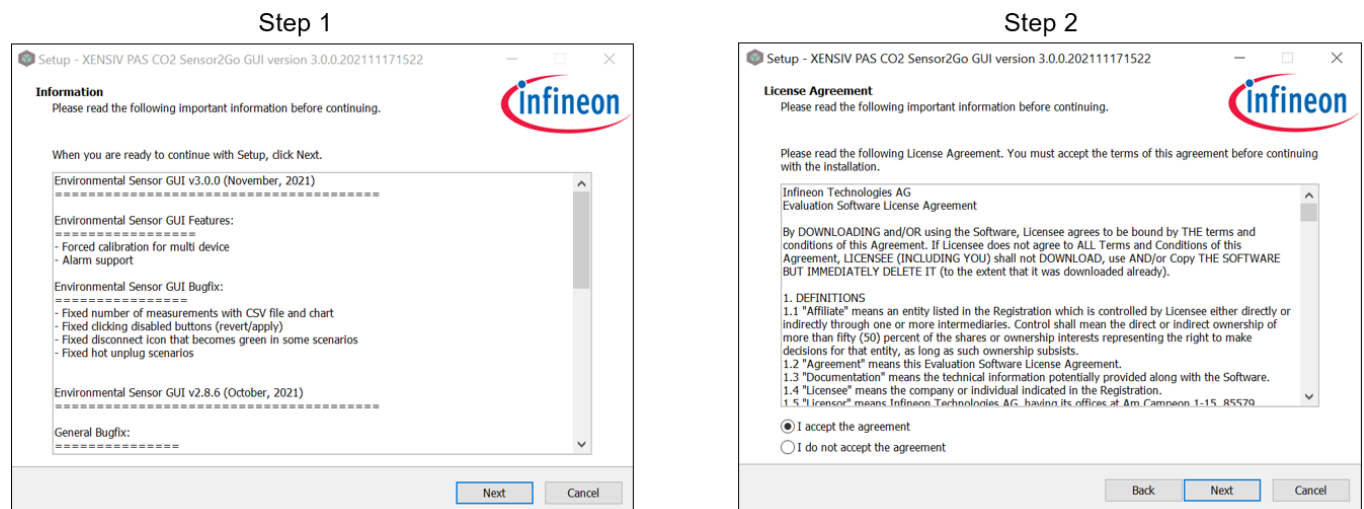


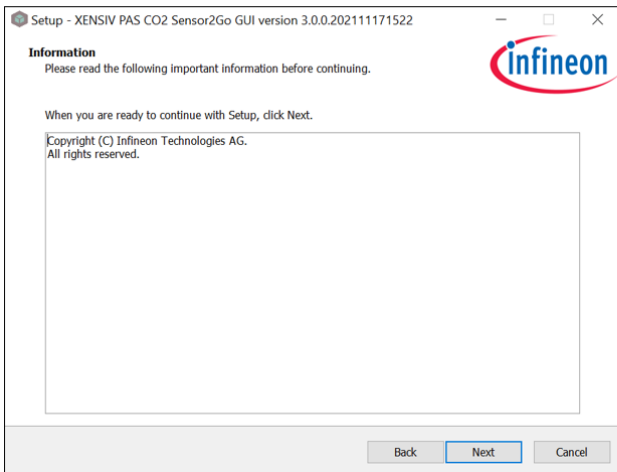
Figure 4 XENSIV™ PAS CO2 Sensor2Go GUI download from the toolbox

3.2 Step 2: Installing the GUI

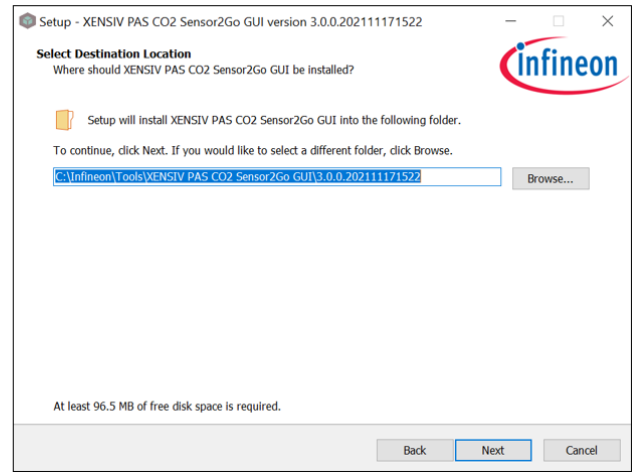
Press the install button from figure 4 and go through the following steps.



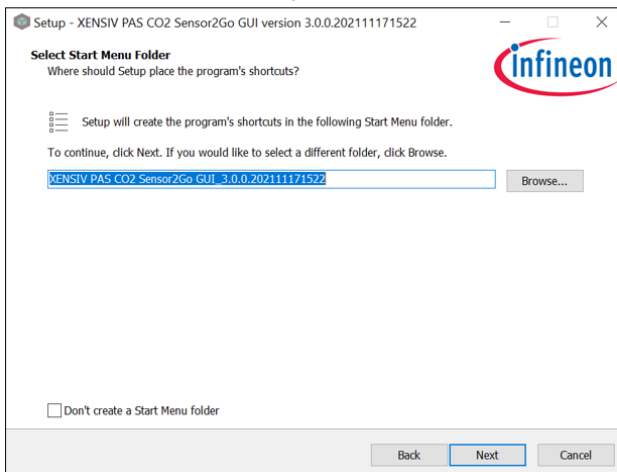
Step 3



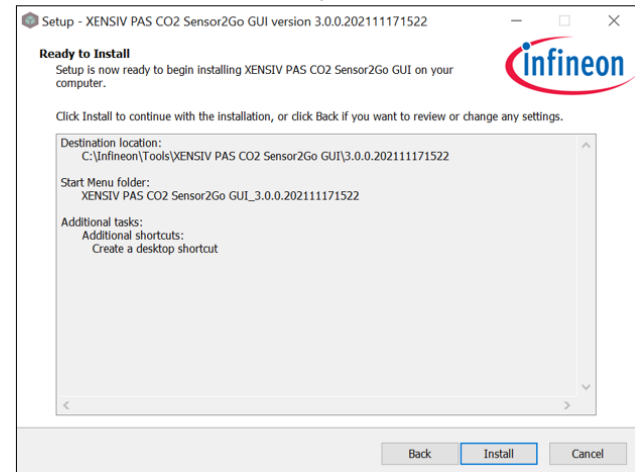
Step 4



Step 5



Step 4



After performing all the necessary steps, Press 'Finish' to exit setup and launch XENSIV™ PAS CO2 Sensor2Go GUI. The startup screen will look like Figure 5.

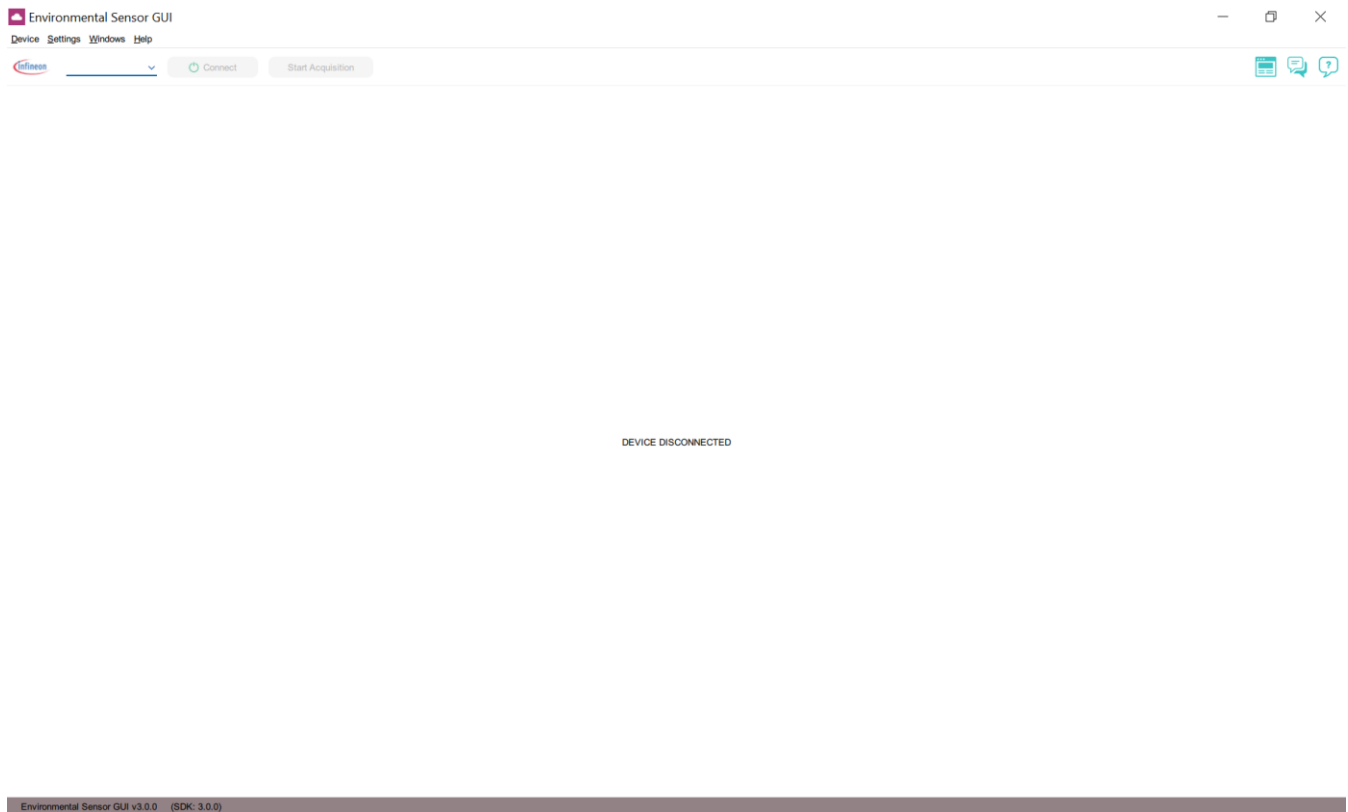


Figure 5 Start-up screen

3.3 Step 3: Connect XENSIV™ PAS CO2 Sensor2Go

Connect a XENSIV™ PAS CO2 Sensor2Go evaluation kit using a micro USB cable as shown in Figure 6.



Figure 6 XENSIV™ PAS CO2 Sensor2Go Evaluation kit connection to PC via micro USB cable

After connecting the sensor, start the data acquisition by pressing a connect button. XENSIV™ PAS CO2 Sensor2Go GUI supports connection to multiple PAS CO2 devices (max 10). After pressing Connect button, all the connected devices are listed in a tree view in the expandable CO₂ devices pane. Device settings and information are available for each device (see Figure 7).

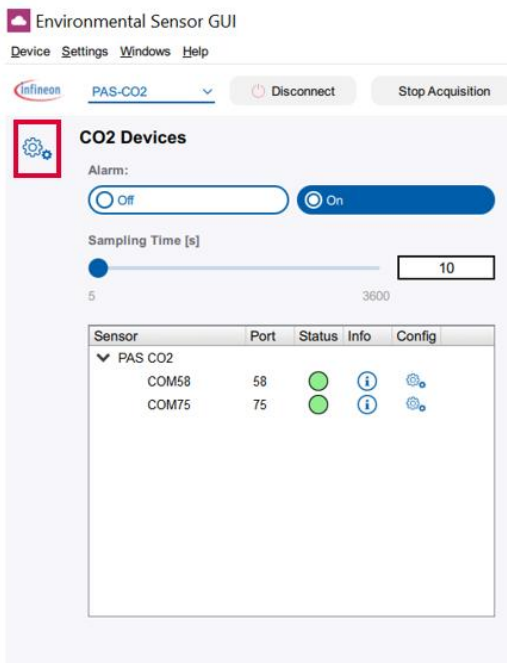


Figure 7 Expandable section view

Note: Data acquisition stops if the connected sensor loses power supply. For long-term measurements please make sure that the laptop/PC is not entering into sleep mode or power-saving mode.

3.4 Main Toolbar

The main toolbar of the XENSIV™ PAS CO2 Sensor2Go GUI consists of controls grouped in four sections according to the functionality they provide (see Figure 8). Those sections are following:

- Connectivity → Device selection and connection controls
- Acquisition → Acquisition controls
- Logging → Logging Settings button
- Help/Forum → For general GUI features

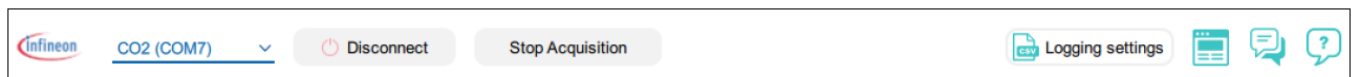


Figure 8 Main Toolbar for XENSIV™ PAS CO2 Sensor2Go GUI.

Data Logging:

XENSIV™ PAS CO2 Sensor2Go GUI application provides a possibility to log measurements and save them into a CSV file. Automatic Logging is turned on by default. The default logging path is “C:\Infineon\Fusion_GUI_Exports”.

Both the logging path and automatic logging option can be set in the Logging Settings window. The logging settings window can be opened with the Logging setting button (see Figure 8) visible in the main application toolbar and also in Main Menu → Settings.

3.5 Additional features

In the installed GUI, customers can use different functionalities of the XENSIV™ PAS CO2 sensor. For accessing additional features, for each of the individual sensors, steps are mentioned in the following figure 9.

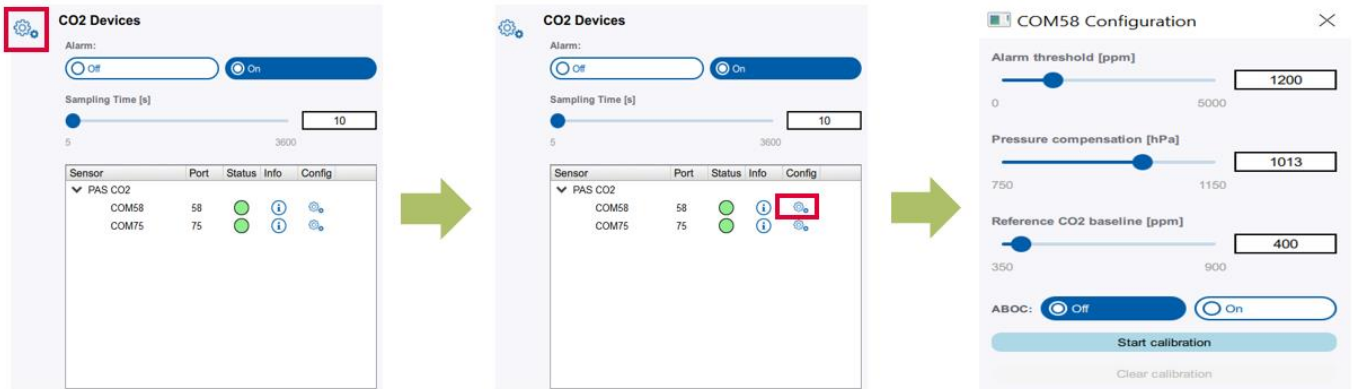


Figure 9 Additional feature window

Alarm threshold [ppm]:

The customer can set the alarm threshold values. If that threshold is surpassed then the customer can see the change in the status color for the set sensor respectively. The alarm threshold will provide the visual alert only.

Pressure compensation [hPa]:

Pressure compensation can be triggered by manually setting the pressure values either via the slider box or typing directly into the text box.

ABOC:

Automatic Baseline Offset Correction (ABOC) can be turned ON/OFF and the baseline value can be adjusted by manually setting the CO₂ values in the “reference CO₂ baseline [ppm]” either via the slider box or by typing directly into the text box.

After changing the related settings press enter and click the “Apply all settings” button from the bottom left corner of the screen as shown in Figure 10.



Figure 10 The “Apply all settings” button

Forced compensation:

Force compensation can also be triggered from the popup from figure 9 with the help of the following steps.

1. Configure the “Reference CO2 baseline [ppm]” via the slider box or by typing directly into the text box
2. After changing the baseline value press enter and click the “Apply all settings” button (figure 10)
3. Start the Forced compensation by pressing the “Start Calibration” button
4. Timer for completion of the forced compensation pops up and the status of the device changes

Note: *Before enabling the Force compensation, the reference CO2 concentration needs to be determined.*

Sampling time configuration [s]:

The customer can set the sampling rate of the sensors via the slider box or by typing directly into the text box as shown in figure 11. After changing the related settings press enter and click the “Apply all settings” button from the bottom left corner of the screen as shown in Figure 10.

Note: *Changes in the Sampling time is global for all devices*

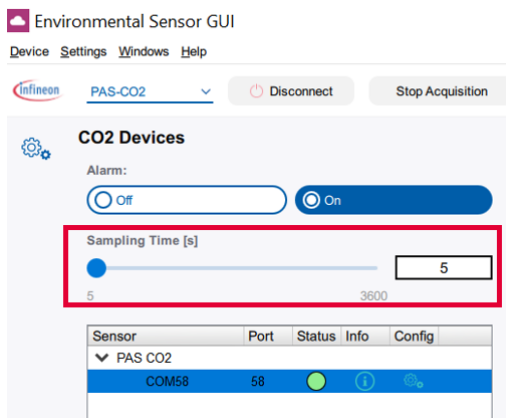


Figure 11 Sampling time configuration [s]:

4 Appendix

4.1 Schematics for evaluation motherboard

Customers who are using the XENSIV™ PAS CO2 mini-evaluation board or standalone XENSIV™ PAS CO2 sensor without the XENSIV™ PAS CO2 evaluation motherboard are encouraged to use the same application circuits for a single and stable power supply.

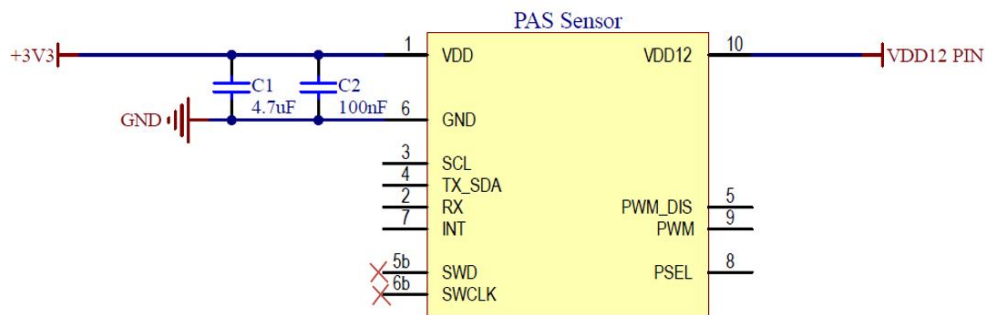


Figure 12 PAS sensor

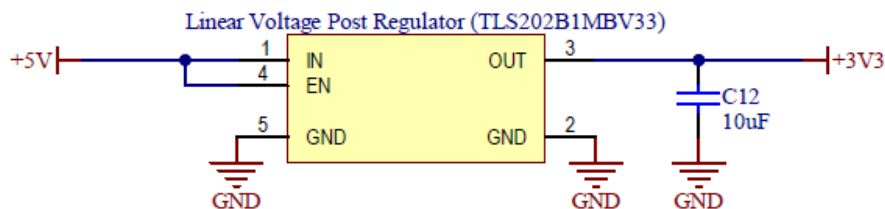


Figure 13 Infineon fixed linear voltage post regulator

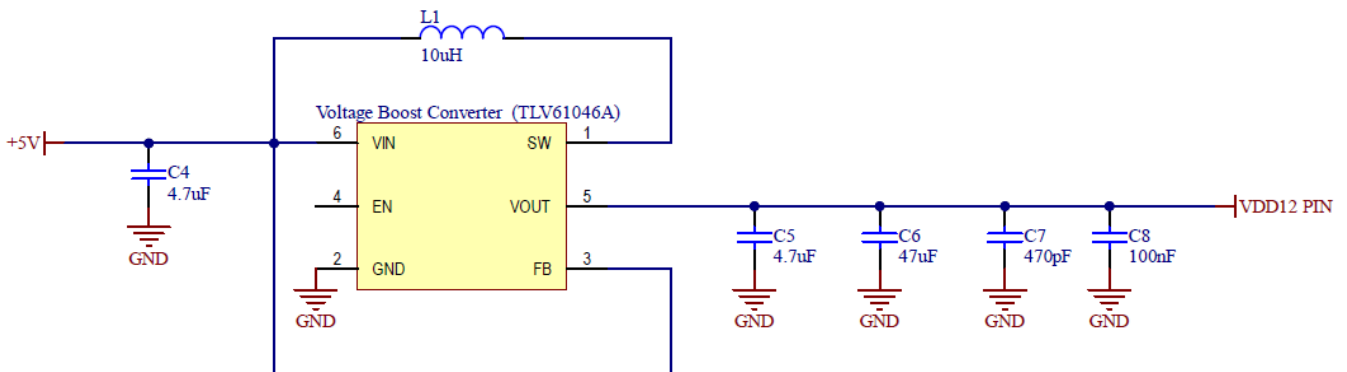


Figure 14 Example voltage boost converter to generate stable 12V

Revision history

Document version	Date of release	Description of changes
V1.0	02.06.2021	Creation
V1.1	26.08.2021	Updated notes
V1.2	14.01.2022	GUI update

Trademarks

All referenced product or service names and trademarks are the property of their respective owners.

Edition 2022-01-14

Published by

Infineon Technologies AG

81726 Munich, Germany

© 2022 Infineon Technologies AG.

All Rights Reserved.

Do you have a question about this document?

Email: erratum@infineon.com

Document reference

AppNote Number

IMPORTANT NOTICE

The information contained in this application note is given as a hint for the implementation of the product only and shall in no event be regarded as a description or warranty of a certain functionality, condition or quality of the product. Before implementation of the product, the recipient of this application note must verify any function and other technical information given herein in the real application. Infineon Technologies hereby disclaims any and all warranties and liabilities of any kind (including without limitation warranties of non-infringement of intellectual property rights of any third party) with respect to any and all information given in this application note.

The data contained in this document is exclusively intended for technically trained staff. It is the responsibility of customer's technical departments to evaluate the suitability of the product for the intended application and the completeness of the product information given in this document with respect to such application.

For further information on the product, technology, delivery terms and conditions and prices please contact your nearest Infineon Technologies office (www.infineon.com).

WARNINGS

Due to technical requirements products may contain dangerous substances. For information on the types in question please contact your nearest Infineon Technologies office.

Except as otherwise explicitly approved by Infineon Technologies in a written document signed by authorized representatives of Infineon Technologies, Infineon Technologies' products may not be used in any applications where a failure of the product or any consequences of the use thereof can reasonably be expected to result in personal injury.