



**Please note that Cypress is an Infineon Technologies Company.**

The document following this cover page is marked as “Cypress” document as this is the company that originally developed the product. Please note that Infineon will continue to offer the product to new and existing customers as part of the Infineon product portfolio.

**Continuity of document content**

The fact that Infineon offers the following product as part of the Infineon product portfolio does not lead to any changes to this document. Future revisions will occur when appropriate, and any changes will be set out on the document history page.

**Continuity of ordering part numbers**

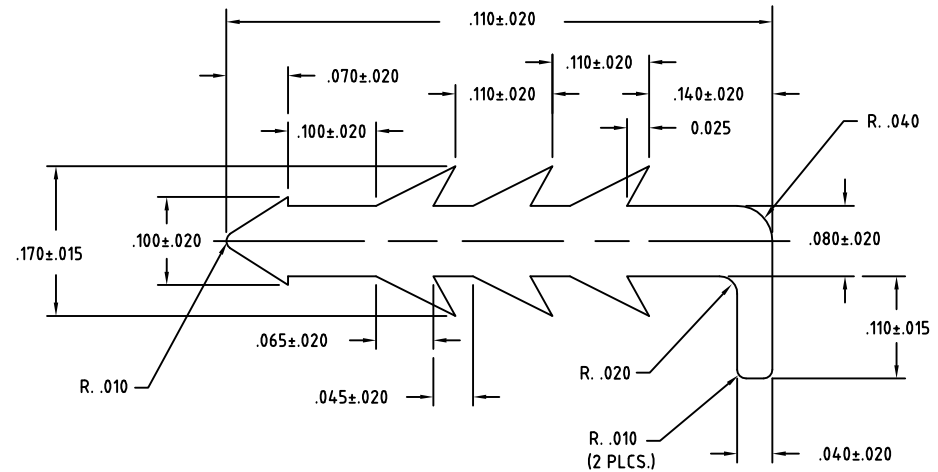
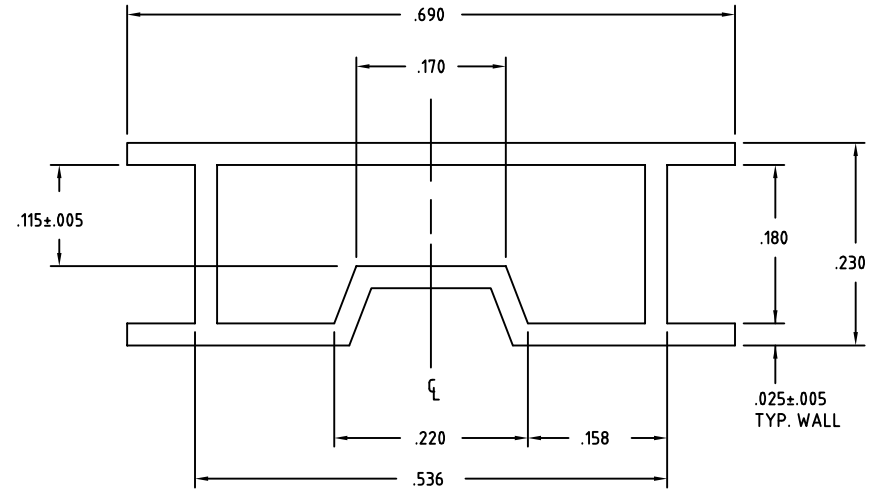
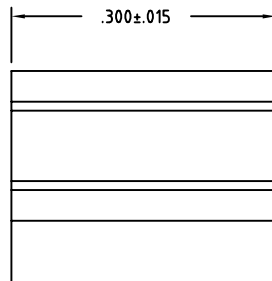
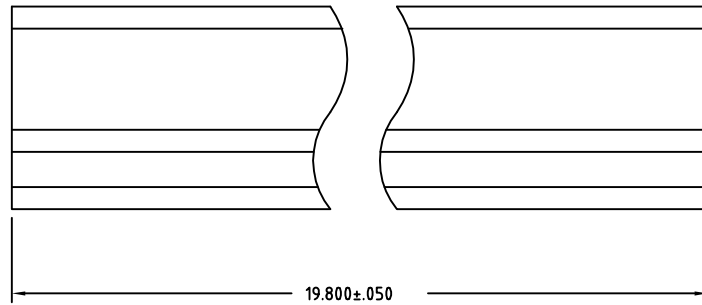
Infineon continues to support existing part numbers. Please continue to use the ordering part numbers listed in the datasheet for ordering.

REVISIONS

PAGE	ZONE	REV	ECN	DESCRIPTION	DATE	APPROVED
1	-	**	56825	NEW RELEASE	06/15/98	
1	-	*A	2781496	CHANGED TO STANDARD DRAWING FORMAT CHANGED TITLE FROM 32LD SOJ SHIPPING TUBE (.400" BODY) TO SHIPPING TUBE, 32LD SOJ (.400" BODY) STB324	10/08/09	TSV
1	-	*B	4117676	TRANSFER DRAWING TO UPDATED TEMPLATE	09/09/13	QAD/AZY
1	-	*C	4146598	UPDATE DRAWING REV.	10/04/13	QAD/AZY

NOTES:

1. PRINTING: "CYPRESS LOGO" AND WORD "CYPRESS SEMICONDUCTOR" AND "ANTISTATIC" PRINT BY BLUE COLOR.
2. TUBE MATERIAL: CLEAR RIGID PVC.
3. TUBE MATERIAL THICKNESS:  $.025 \pm .005$ .
4. ALL DIMENSIONS ARE SHOWN IN INCHES.
5. ALL TUBE TOLERANCES TO BE  $\pm .010$



UNLESS OTHERWISE SPECIFIED		DESIGNED BY	DATE		
ALL DIMENSIONS ARE IN MILLIMETERS STANDARD TOLERANCES ON:					
DECIMALS	ANGLES	DRAWN	DATE		
.XX ± 0.05	± 1°	XVC	09/09/13		
.XXX		CHK BY	DATE		
.XXXX		RODP	09/09/13		
		APPROVED BY	DATE		
		QAD	09/09/13		
MATERIAL		APPROVED BY	DATE		
DEFAULT TEXT		AZY	09/09/13		
FINISH					
DEFAULT TEXT					
TITLE		SIZE	PART NO.	DWG NO.	REV
SHIPPING TUBE, 32LD SOJ (.400 BODY) STB324		A	STB324	51-51069	*C
DO NOT SCALE				SHEET 1 OF 1	