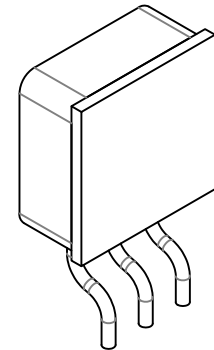
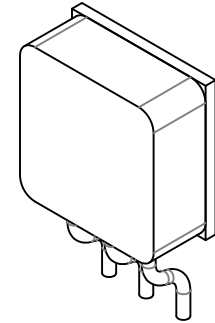
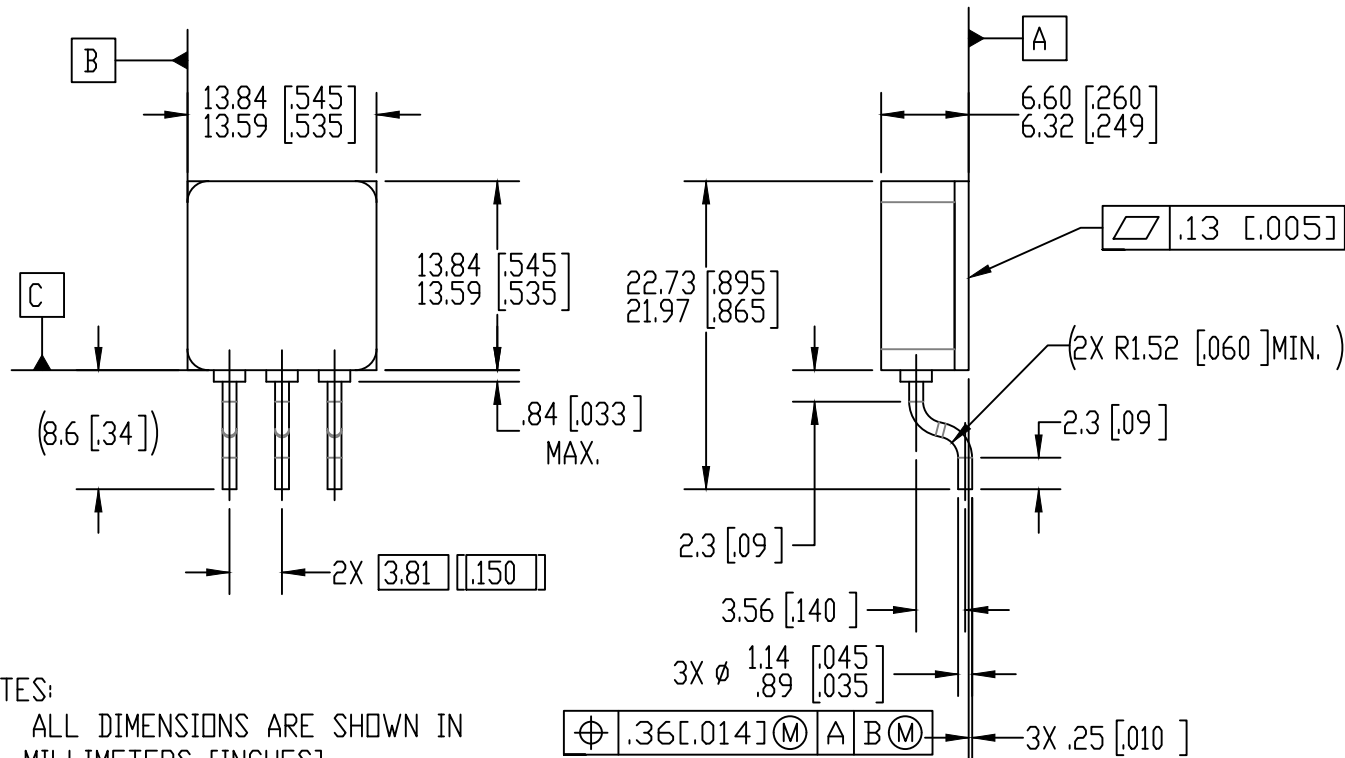


REV.	DESCRIPTION	ECN	DATE
C	CHANGE PER ECN	1120_10089	9-16-24



NOTES:

1. ALL DIMENSIONS ARE SHOWN IN MILLIMETERS [INCHES]
2. CONFORMS TO JEDEC OUTLINE TO-254AA
3. STANDARD FINAL FINISH ON ALL TERMINALS IS SOLDER ALLOY 63%Sn 37%Pb.

**IOR** HiRel

An Infineon Technologies Company

TITLE: TO-254AA TABLESS SMT (D1), LEAD FORM	
DRAWING NO. D101013G-WEB	REV C